

Newsletter

Talk, read, play and learn together

The Early Learning Initiative provides children and young people with lots of fun learning experiences that encourage them to succeed in education and life.

Since 2008, hundreds of children attended the National College of Ireland. Some of their accomplishments include presenting exhibitions, reading thousands of books, building and programming robots, making profits from their small businesses and being the co-authors and illustrators of three published children's books.



Can you believe that it is 10 years since ELI was launched on 28th January 2008?



Thank You

Each of our partners have played an essential role in the development of ELI. We would like to thank:

- **Children and young people** for your enthusiasm for learning and your active involvement in ELI's Programmes
- **Parents and family members** for your interest in your children's education and for creating a positive home learning environment where you talk, read and play with your children every day
- **Services and schools** for working with us to support parents and create a brighter future for children and young people
- **Community, statutory and voluntary organisations** for sharing with us your commitment to and expertise in improving outcomes for children, young people and their communities
- **Corporate partners and volunteers** for investing in and building relationships with the community as well as supporting the children and young people to have the skills and qualifications to work in your organisations.
- **Government** for your continuous support and interest in helping ELI ensure that education is at the heart of a more cohesive, more equal and more successful society; thereby making Ireland one of the best places to grow up, live, work and rear a family.

While much has changed over the 10 years, some things have stayed the same. The message from parents in 2008 was, "We love our children. We want them to do well. We don't know how". Since then, ELI has been working with parents and professionals to ensure that children have the social, language, literacy and numeracy skills they need for success in education, employment and life. Our assessments tell us that children and young people involved with ELI are doing well in terms of educational outcomes and aspirations.

ELI's partnership approach and can do attitude continues to be valued. Learning is seen as enjoyable and something to be shared between families, schools, services and our corporate partners. NCI remains a community space, where in the words of a local nine-year old, "Good things happen".

Described as ambitious and innovative in both the Irish and international context, ELI continues to develop pioneering programmes that address the needs of the children, families and services in our communities. ELI achievements are the result of people having the vision and courage to explore new possibilities and work together to "nurture and support children and young people to grow into strong individuals with the capacity and resolution to achieve their dreams".

A new decade is beginning for ELI. If we are to build on our achievements, we will need the on-going interest, commitment and participation of our local community and corporate partners as well as Government funding and support. We are excited about the future and look forward to continuing to working with you all to build a better brighter future for our children, young people and their families.

Quiz

Our next NCI Challenge for 4th classes will be the NCI Table Quiz Challenge in March 2018.

Try out our sample quiz and start practicing!

1. What is the platform number in King's Cross Station for the Hogwarts Express?
2. Where can you watch the Highland Games?
3. Complete the directions to Neverland from Peter Pan: "Second star to the right, and..."
(a) A left at the red light (b) Straight on till morning (c) Skip & jump to the moon
4. Which side of a ship is 'starboard': left or right?
5. Which tribes are native to New Zealand?
(a) Zulu (b) Maori (c) Apache

Check below for the answers... how many did you answer correctly?

Quiz Answers:
1. Platform 9 3/4 2. Scotland 3. (b) Straight on till morning 4. Right 5. (b) Maori

Corporate, government and individual support is fundamental to our success. We wish to thank all of our socially minded corporate, government and individual supporters, including: Dermot Desmond, Joseph E. Corcoran, David and Michele Joy, Keith Ennis and The Winifred Garvin Fund, who play such an active role in the advancement of ELI.

The Area Based Childhood Programme 2013-2018



Early Learning Initiative
National College of Ireland



ABC 0-2 Celebrating the Little Things

Our 0-2 Years Programme continues to grow since its birth in September 2015. To date we have almost worked with almost 100 families to celebrate the milestones in their child's first years.

When there is a new baby in the home, the days can be so busy that we sometimes forget to stop and celebrate the little things a new baby learns on a daily or weekly basis. Capturing the first smile to the first word, from looking at you for the first time to learning to crawl and eventually walking, these are all moments that should be cherished. Remember, even though we need to encourage these milestones, every child is unique and they will reach these stages at different times. Our 0-2 Home Visiting team are here to offer support and guidance.



Parent Child Home Programme (PCHP)

Over 30,000 home visits have been made. This year PCHP will celebrate its 10-year anniversary in Ireland, thanks to the continued support and funding from our corporate partners and the Government. Having grown both locally and nationwide, we are now working with families from many different cultures and backgrounds.

Reflecting on the last ten years, it has been a pleasure engaging and building relationships within this wonderful community. Families' investment in their children's learning has laid the foundations for their children to succeed. We look forward to the next ten years of PCHP and continued growth nationally.

Changes in the ELI

Number of	2008	2018
People involved with an ELI Programme	400	9,188
Parent Child Home Programme Areas	1	7
Services and Schools	19	67
Parent Child Home Programme Families	16	176
ELI Volunteers	10	300
ELI Staff	9	50
ELI Programmes	7	17
Corporate, Trusts and Foundations Partners	6	42
Government, EU and Statutory Organisations	4	12
Pages in the Annual Report	21	170

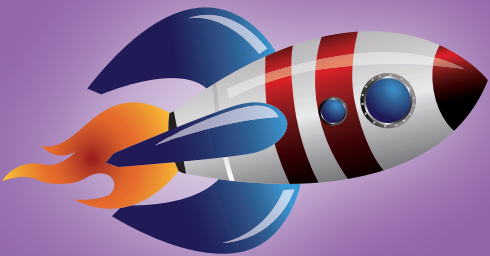
Zoom Ahead with Books

This year ELI will celebrate ten years of reading, discussing, drawing and exhibiting our favourite books and pictures through the Zoom Ahead with Books project in the Dublin Docklands and East Inner City.

When ELI began its collaboration on this project with St. Laurence O'Toole's Junior Boys School for the first time in 2008, a total of 70 children and their book buddies read 1682 books. In 2018 we are expecting approximately 800 children to enjoy the Zoom Ahead with Books programme.



Reflecting on the last ten years, many of the children participating in the project have gone on to become book buddies themselves — younger brothers and sisters, nieces and nephews. This reaffirms the commitment shown by Mary Moore and all in St. Laurence O'Toole's Junior Boys School in recognising the importance of parental involvement and raising awareness of the role that the family, community and local schools can play in promoting literacy. It has been a pleasure engaging with families, hearing your stories and seeing your wonderful pictures, and we look forward to the next ten years of Zoom Ahead with Books and its continued growth across the Dublin Docklands and East Inner City.



Zoom Ahead with Books

(To the tune of:
Do Your Ears Hang Low?)

The more that you read,
The more that you will know.
And the more that you know,
The smarter you will grow.
It's smarter that you'll grow,
It's easy take a look,
And Zoom Ahead with Books.



Just open up a book
And in there you will see,
All kinds of words and numbers,
Magic and mystery.
There are books with funny stories
And lots of pictures, too.
An adventure for your book buddy
and you.

Did you read The Gruffalo?
Did he wobble to and fro?
Between The Snail and the Whale,
Did they swim or did they sail?
In The Magic Porridge Pot,
Was it cold or was it hot?
Let's Zoom Ahead with Books.



On Elmer's Special Day,
Did the monkeys come and play?
If Giraffes Can't Dance,
Can the zebras jump and prance?
Bear Hunts get you muddy,
But for me and my book buddy,
We'll Zoom Ahead with Books!



Early Numeracy Project 2018



In November 2017 our numeracy theme focused on Positional Language.

Our upcoming numeracy theme for February 2018 is 'Shape'. Parents can support their children's learning by talking to them about the shapes they see in their environment, "Look, what shape is the window or door?" Parents can also visit their local library and borrow books about shape to read to their child and support their learning.

Our numeracy themed week will be held from Monday 26th of February to Friday March 2nd.

